

**E-5**

**PROCUREMENT OF GOODS  
UNDER  
NATIONAL SHOPPING PROCEDURES**

*(For Contracts valued less than the  
equivalent of US \$30,000 each)*

**INVITATION FOR QUOTATIONS FOR SUPPLY OF  
GOODS UNDER NATIONAL SHOPPING PROCEDURES**

SUB :- INVITATION FOR QUOTATIONS FOR SUPPLY AND  
INSTALLATION OF PREFABRICATED FIBERGLASS  
DOME WITH PLATFORM

1. You are invited to submit your most competitive quotation for the following goods:-

Brief Description of the Goods	Specifications *	Quantity	Delivery Period	Place of Delivery	Installation Requirement if any
SUPPLY AND INSTALLATION OF PREFABRICATED FIBERGLASS DOME WITH PLATFORM	Annexure - I Attached herewith	1	1 months	Sea Turtle Hatchery Okha Madhi, Jamnagar-Dwarka high way, Dwarka, District – Devbhumi Dwarka	Yes

*\* Where ISI certification marked goods are available in market, procurement should generally be limited to goods with those or equivalent marking only.*

2. Government of India has received a credit from the International Development Association (IDA) in various currencies equivalent to Rs.898.12 corers towards the cost of the Integrated Coastal Zone Management Project and intends to apply part of the proceeds of this credit to eligible payments under the contract for which this invitation for quotations is issued.

3. **Bid Price**

- a) The contract shall be for the full quantity as described above. Corrections, if any, shall be made by crossing out, initialing, dating and rewriting.
- b) All duties, taxes and other levies payable on the raw materials and components shall be included in the total price.
- c) Sales tax/Vat/GST in connection with the sale shall be shown separately or included.
- d) The rates quoted by the bidder shall be fixed for the duration of the contract and shall not be subject to adjustment on any account.
- e) The Prices shall be quoted in Indian Rupees only.

4. Each bidder shall submit only one quotation.

5. **Validity of Quotation**

Quotation shall remain valid for a period not less than 60 days after the deadline date specified for submission.

6. **Evaluation of Quotations**

The Purchaser will evaluate and compare the quotations determined to be substantially responsive i.e. which

- (a) Are properly signed; and
- (b) Conform to the terms and conditions, and specifications.

The Quotations would be evaluated for all the item together/would be evaluated separately for each item.

7. **Award of contract**

The Purchaser will award the contract to the bidder whose quotation has been determined to be substantially responsive and who has offered the lowest evaluated quotation price.

7.1 Notwithstanding the above, the Purchaser reserves the right to accept or reject any quotations and to cancel the bidding process and reject all quotations at any time prior to the award of contract.

7.2 The bidder whose bid is accepted will be notified of the award of contract by the Purchaser prior to expiration of the quotation validity period. The terms of the accepted offer shall be incorporated in the purchase order.

8. Payment shall be made after delivery of the goods.

9. Normal commercial warranty/ guarantee shall be applicable to the supplied goods.

10. You are requested to provide your offer latest by **18:00 Hrs. on 19/11/2018**

11. Quotation to be addressed to **“Deputy Conservator of Forest, Marine National Park, Jamnagar”**

12. **"Quotation for Prefabricated Fiberglass Dome"** should be mentioned on top side of envelope.

13. We look forward to receiving your quotations and thank you for your interest in this project.

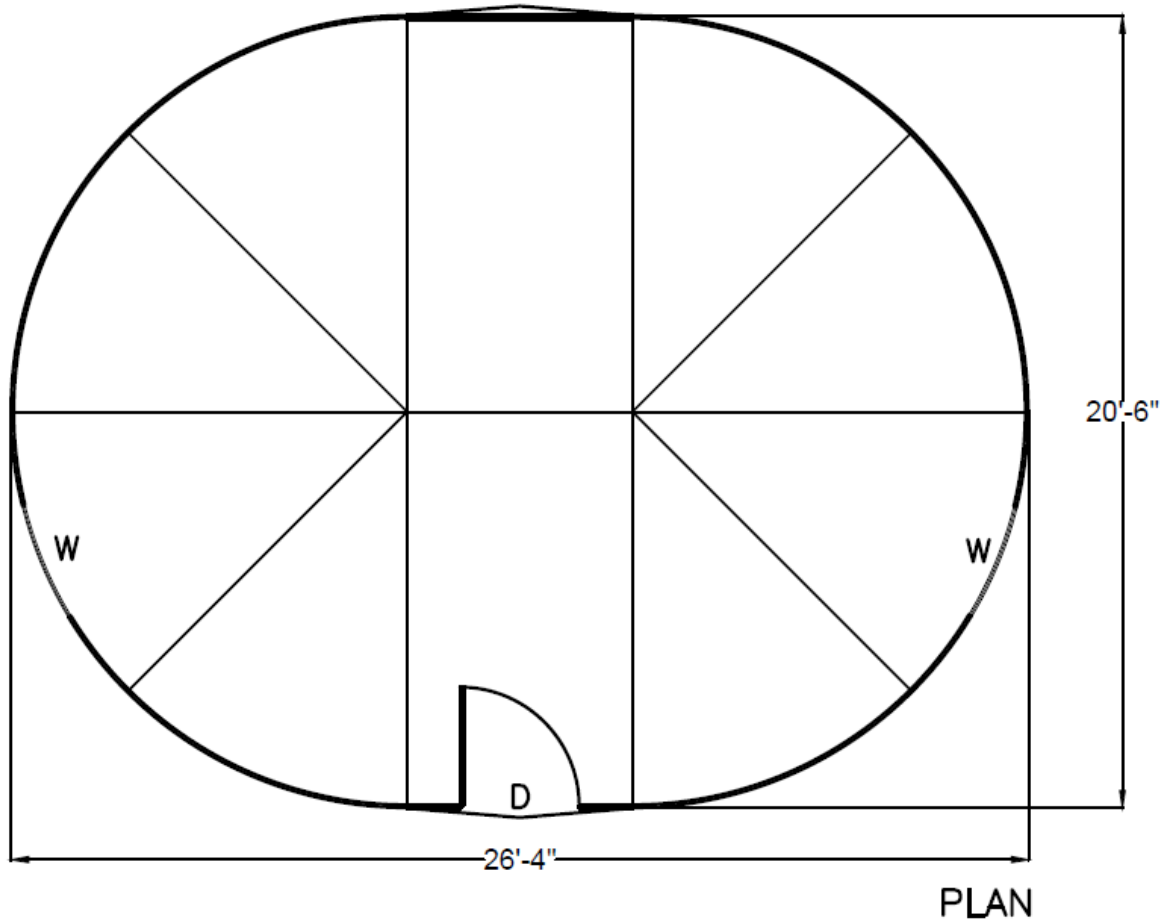
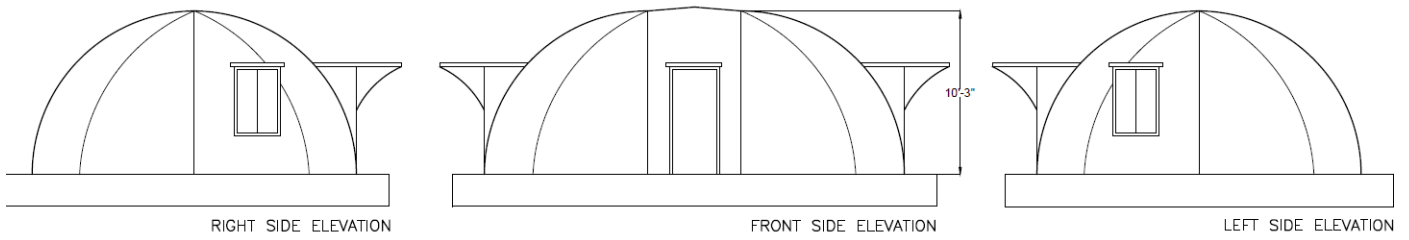
Contact : -

Office of the Chief Conservator of Forest,  
Marine National Park, Ganjiwada, Near Naganath Gate,  
Indira Marge, Jamnagar – 361001 [Gujarat].  
Ph. No. - 0288-2679357, Fax : 0288-2770161

## Annexure - I – Specifications

### Prefabricated Fiberglass Dome Structure: -

#### Design: -



DIMENSION in feet			Carpet area(sq ft.)
L	W	H	
26'-4"	20'-6"	10'-3"	450

OPENING SCHEDULE			
KEY	I.D.	DIMENSION	
		L	H
D	DOOR OPENING	37"	81"
D1	DOOR OPENING	24"	81"
W	WINDOW OPENING	37"	52"
V	VENTILATION OPENING	24"	12"

**Size :-**

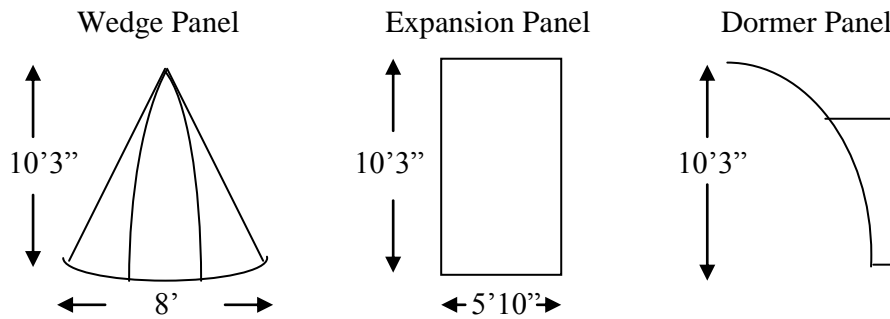
Length - 26'4", Width - 20'6", Height - 10'3" (from central),  
Carpet Area 450 sq.ft. (41.82m<sup>2</sup>)

**Platform :-**

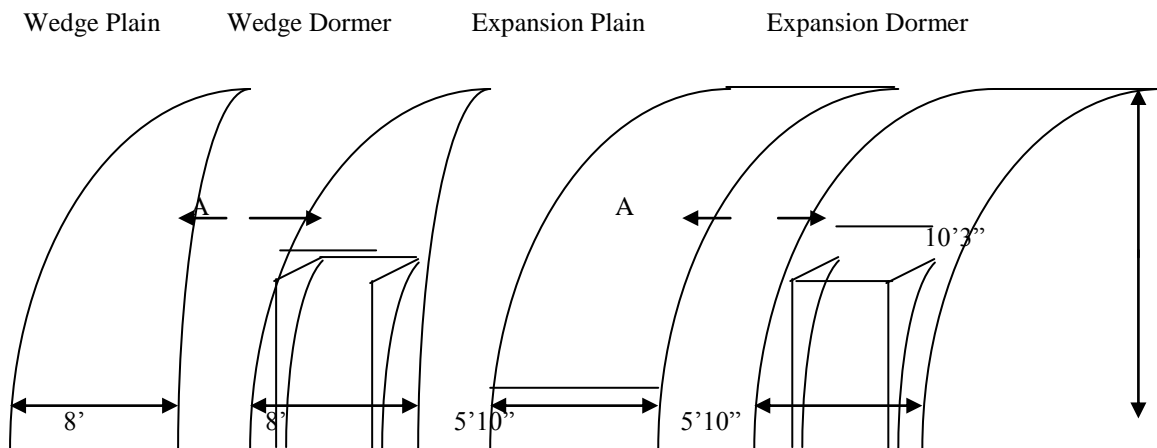
FRP Platform with size 27' x 22' x 18", Platform should be made with FRP tube with tube size of : 100 mm X 100 mm X 6 mm. FRP tube should be filled with soil (inside FRP tubes). Platform should be covered with flooring of 5 mm FRP Sheet on upper side.

**Facility :-** Attached FRP toilet bathroom inside dome with bio-tank of 500 lt. and water tank of 500 lt. including all types of electric and plumbing work and required accessories.

**Details of Panels:**



**10'3" Height Panels:**



**Other Details :-**

No of wedge Panel :- 8

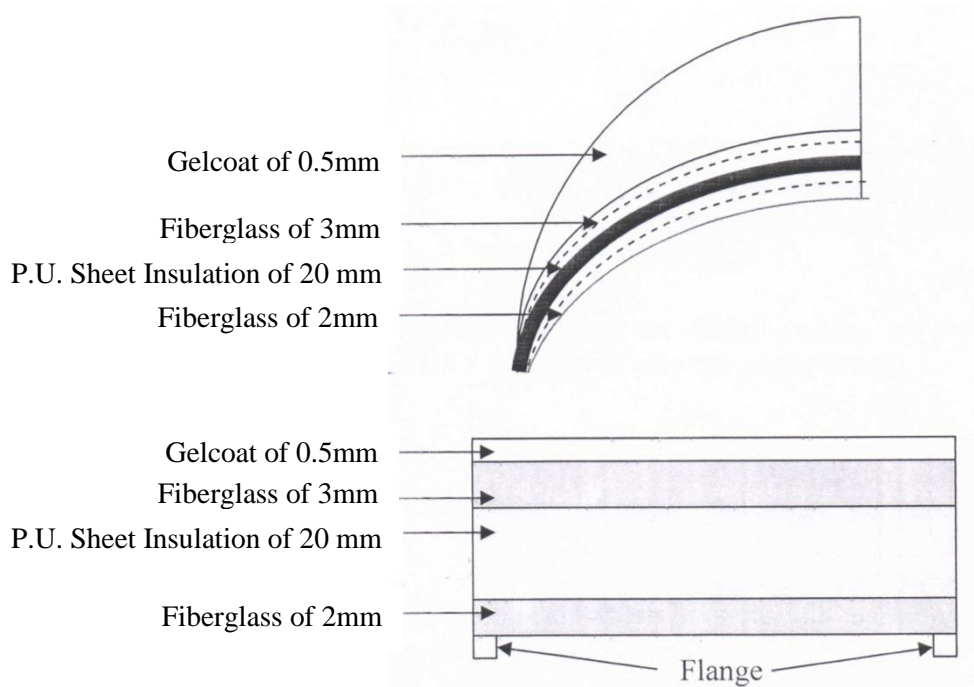
No of Expansion Panel :- 2 (including dormer)

Details of Panels :- Panel Thickness :- 25 mm, Insulation Thickness :- 19 mm

### List of Panels being used:

Wedge Panel Plain	Canopy
Wedge Panel Dormer	Bubble Window
Wedge Panel Bubble Window	HDPE Pipe
Expansion Panel Plain	Silicon Sealant
Expansion Panel Dormer	ISI make Iron Anchor Bolts
Expansion Panel Window	ISI make Iron Bolts & Nuts

Materials of Panels : Fiberglass-Gel Coat, Unsaturated Polyester Resin-Acetone, MEKP- P.U.Sheet



Insulation Type : P.U. Sheet (Polyurethane)

Thickness of Flange :- 4-5 mm

No of Door : - 1 (one) Aluminum Door (Size: 37"x82")

No of Window :- 3 (three) Aluminum Windows (Size: 37"x53")

### Accessories:

- Bubble Window made out of Poly Carbonate of 32" OD, 28" ID
- Canopy made out of Fiberglass of 4' length, 2' width, 2 mm thick.
- Silicon Sealant for sealing panel joints
- HDPE Pipes for flange cover
- ISI make Iron Anchor Bolts of 4"x $\frac{1}{4}$ " size
- ISI make Iron Bolts and Nuts 2"x $\frac{5}{16}$ " size
- All the joints are connected with nuts/bolts of  $\frac{5}{16}$ " size and 2" long as well as anchor bolts of  $\frac{3}{8}$ " size and 3" long and silicon sealants. The seams are covered with HDPE Pipe of 2" dia and the outside joints are filled with GE make Silicon Sealant. Doors and Windows are fitted with bolts and nuts.
- The height of the Dome will be 10.3" (from central).
- Electrical, plumbing, etc. can be done as per conventional system.

**FORMAT OF QUOTATION FOR THE PREFABRICATED FIBERGLASS DOME  
WITH PLATFORM**

No	Description of Goods	Specifications	Qty	Unit	Quoted Unit Rate in Rs.	Total Amount	
						In Figures	In Words
	<b>TOTAL</b>						
	<b>GST</b>						

**Gross Total Cost : Rs. ....**

We agree to supply the above goods in accordance with the technical specifications for a total contract price of Rs. ....(amount in figures ) (Rs. .... amount in words) within the period specified in the Invitation for Quotations.

We also confirm that the normal commercial warrantee/guarantee of ..... months shall apply to the offered goods.

We hereby certify that we have taken steps to ensure that no person acting for us or on our behalf will engage in bribery.

**Signature of Supplier**

\* *Applicable while the bids are being invited for more than one item and would be evaluated for all the items together. Modify where evaluation would be made for each item separately.*